

MONTHLY MEMBERSHIP PROGRESS REPORT

LOCATION ARKANSAS

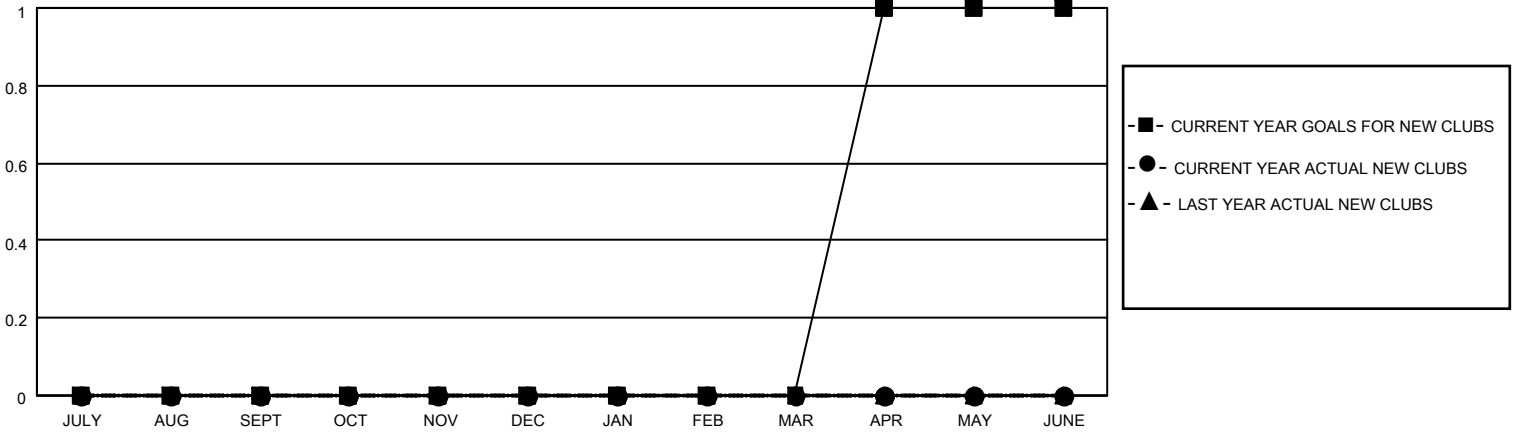
District 7 O

Results as of: 1/31/2021

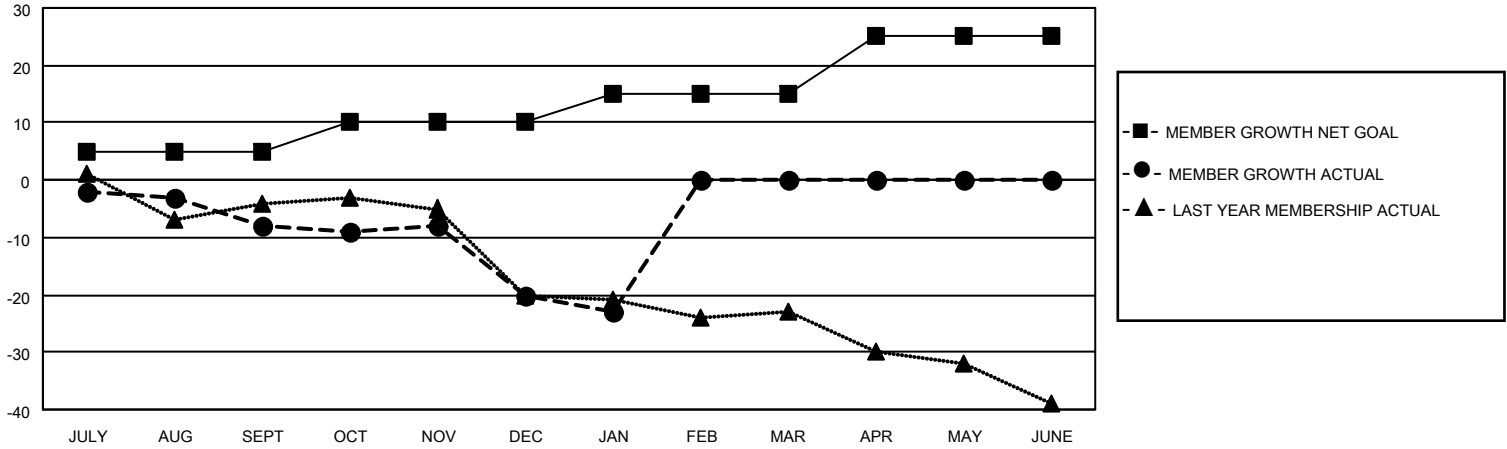
Clubs			
RESULTS FOR 2020-2021			
QUARTER	NEW CLUB GOAL	NEW CLUBS	DROPPED CLUBS
JULY/AUG/SEPT	0	0	0
OCT/NOV/DEC	0	0	0
JAN/FEB/MAR	0	0	0
APR/MAY/JUNE	1	0	0

Members			
RESULTS FOR 2020-2021			
QUARTER	MEMBER GROWTH NET GOAL	MEMBER GROWTH ACTUAL	DROPPED MEMBERS ACTUAL (including transfers)
JULY/AUG/SEPT	5	6	14
OCT/NOV/DEC	5	7	19
JAN/FEB/MAR	5	1	4
APR/MAY/JUNE	10	0	0

GOALS AND ACTUAL NEW CLUBS CUMULATIVE



GOALS AND ACTUAL MEMBERS CUMULATIVE



DROPPED CLUBS: 0	9 CLUBS OF 26 ADDED 1 OR MORE NEW MEMBERS	<u>GENDER DISTRIBUTION</u> MALE 378 (65.40%) FEMALE 200 (34.60%)
<u>DROPPED MEMBERS</u> DECEASED 10 CLUB CANCELLED 0 OTHER 27 <hr/> TOTAL 37	CLICK HERE FOR CUMULATIVE MEMBERSHIP DATA	TOTAL FAMILY UNIT MEMBERS 124 FAMILY MEMBERS PAYING HALF DUES 64